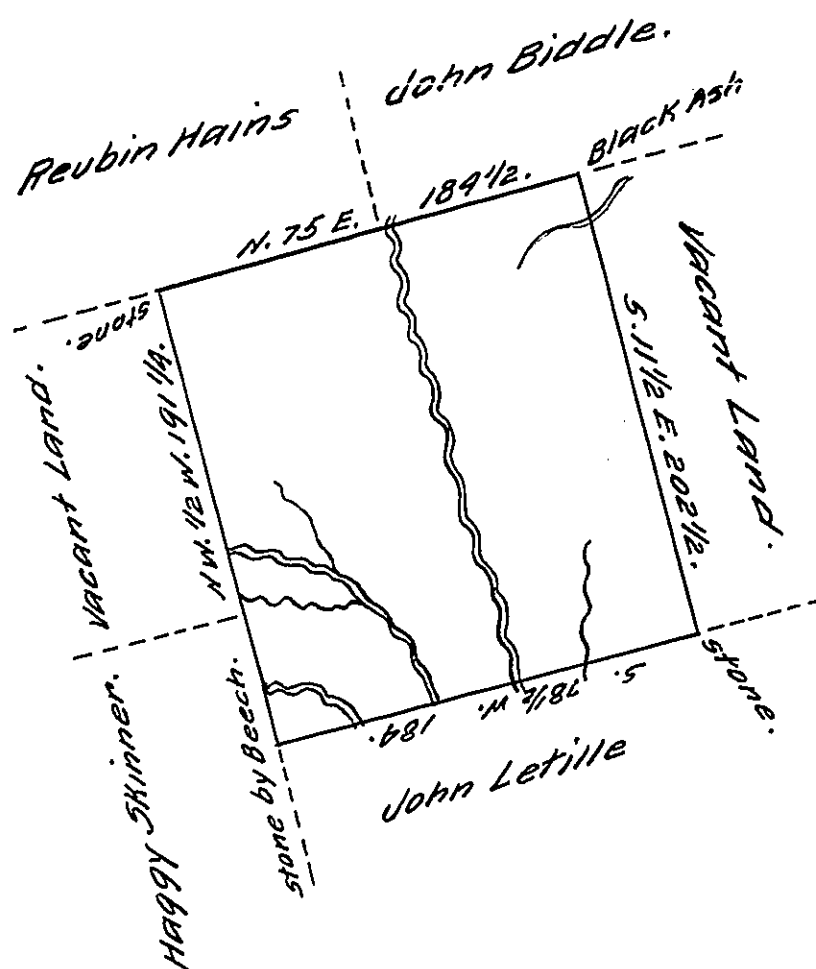


FORM NO. 1.



By virtue of a warrant dated the 23d. of January 1775  
 Surveyed the 28th of November 1776 to Peter Hay the above  
 Described tract of Land situate on the North East branch  
 of Corkins's Creek about a mile from Land Surveyed for  
 Mr Hockley in Northampton County. Containing two hund-  
 red & thirteen Acres and ninety perches and the Allow-  
 ance of Six p. Cent &c.

p. Geo. Palmer, D. S.

To John Lukens Esqr. }  
 Surveyor General. }

IN TESTIMONY that the above is a copy of the original remaining on file in  
 the Department of Internal Affairs of Pennsylvania, made  
 conformably to an Act of Assembly approved the 16th day of  
 February, 1833, I have hereunto set my Hand and caused  
 the Seal of said Department to be affixed at Harrisburg,  
 this sixteenth day of October 1911

*Henry Howell*  
 Secretary of Internal Affairs.